

Cowichan Bay, and Maple Bay Area Predicted Forage Fish Habitat

The predicted forage fish habitat identified using the "Suitable Forage Fish Spawning Habitat in the Gulf Islands" ShoreZone model is selecting for favourable spawning habitat attributes for forage fish, including specific sediment types, presence of overhanging vegetation, and protected to semi-exposed beach types.

- Predicted Continuous Suitable Forage Fish Habitat
- Predicted Patchy Suitable Forage Fish Habitat
- ShoreZone Mapping Completed in 1990's

Scale 1:80,000



Imagery sourced from Esri
Predicted habitat model credited to Coastal & Ocean Resources Inc.
Suitable forage fish habitat sourced from Islands Trust



Crofton, and Chemainus Area Predicted Forage Fish Habitat

The predicted forage fish habitat identified using the "Suitable Forage Fish Spawning Habitat in the Gulf Islands" ShoreZone model is selecting for favourable spawning habitat attributes for forage fish, including specific sediment types, presence of overhanging vegetation, and protected to semi-exposed beach types.

- Predicted Continuous Suitable Forage Fish Habitat
- Predicted Patchy Suitable Forage Fish Habitat
- ShoreZone Mapping Completed in 1990's

Scale 1:70,000



Imagery sourced from Esri
Predicted habitat model credited to Coastal & Ocean Resources Inc.
Suitable forage fish habitat sourced from Islands Trust



Gabriola Island Predicted Forage Fish Habitat

The predicted forage fish habitat identified using the “Suitable Forage Fish Spawning Habitat in the Gulf Islands” ShoreZone model is selecting for favourable spawning habitat attributes for forage fish, including specific sediment types, presence of overhanging vegetation, and protected to semi-exposed beach types.

- Predicted Continuous Suitable Forage Fish Habitat
- Predicted Patchy Suitable Forage Fish Habitat
- ShoreZone Mapping Completed in 1990's

Scale 1:85,000



Imagery sourced from Esri

Predicted habitat model credited to Coastal & Ocean Resources Inc.
Suitable forage fish habitat sourced from Islands Trust



MAARRI
Mount Arrowsmith Biosphere Region Research Institute



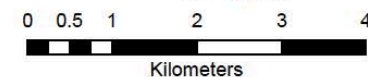


Ladysmith, and Cedar Area Predicted Forage Fish Habitat

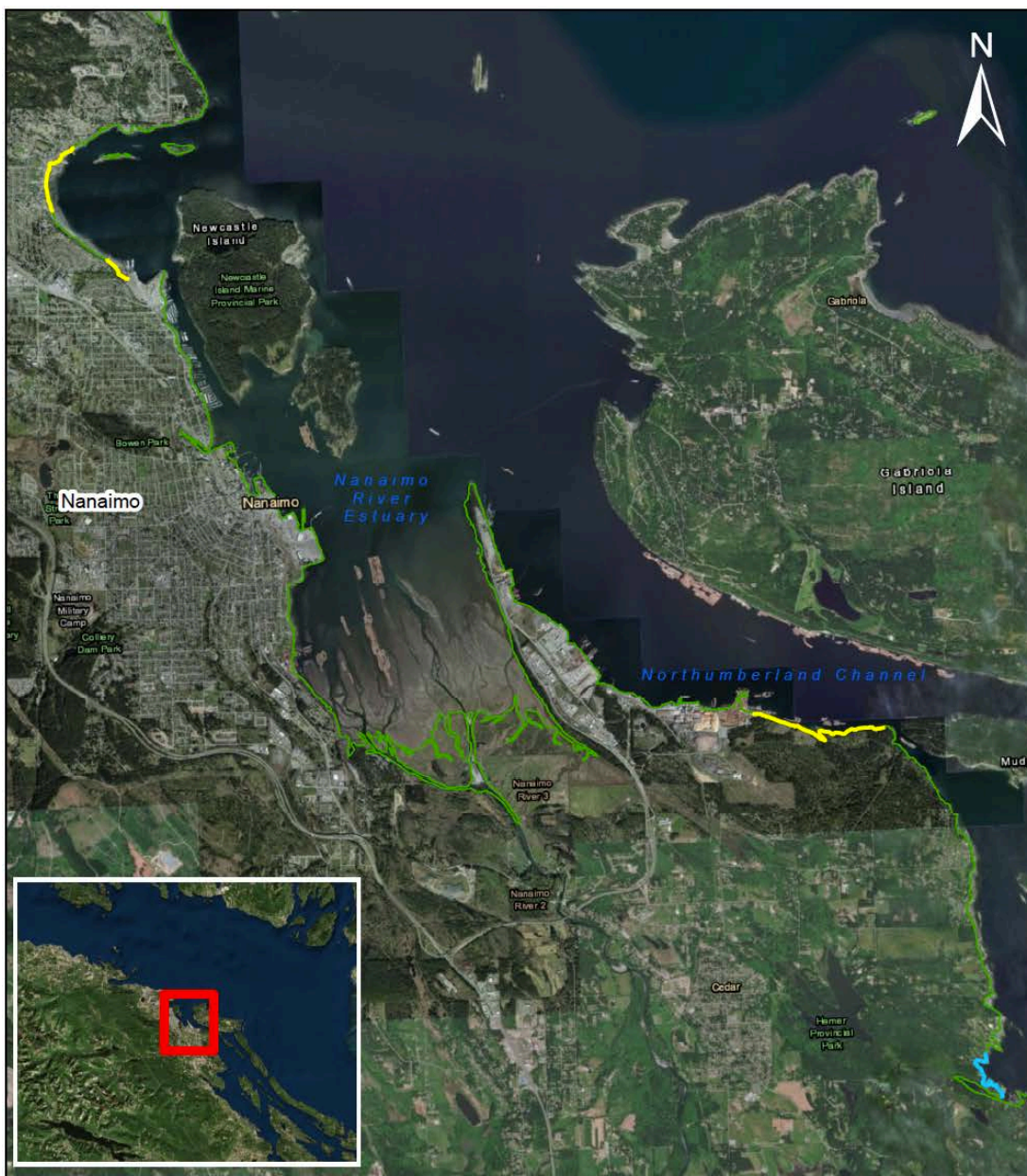
The predicted forage fish habitat identified using the "Suitable Forage Fish Spawning Habitat in the Gulf Islands" ShoreZone model is selecting for favourable spawning habitat attributes for forage fish, including specific sediment types, presence of overhanging vegetation, and protected to semi-exposed beach types.

- Predicted Continuous Suitable Forage Fish Habitat
- Predicted Patchy Suitable Forage Fish Habitat
- ShoreZone Mapping Completed in 1990's

Scale 1:70,000



Imagery sourced from Esri
Predicted habitat model credited to Coastal & Ocean Resources Inc.
Suitable forage fish habitat sourced from Islands Trust



Nanaimo Area Predicted Forage Fish Habitat

The predicted forage fish habitat identified using the "Suitable Forage Fish Spawning Habitat in the Gulf Islands" ShoreZone model is selecting for favourable spawning habitat attributes for forage fish, including specific sediment types, presence of overhanging vegetation, and protected to semi-exposed beach types.

- Predicted Continuous Suitable Forage Fish Habitat
- Predicted Patchy Suitable Forage Fish Habitat
- ShoreZone Mapping Completed in 1990's

Scale 1:75,000



Imagery sourced from Esri
Predicted habitat model credited to Coastal & Ocean Resources Inc.
Suitable forage fish habitat sourced from Islands Trust



Nanoose Bay, and Lantzville Area Predicted Forage Fish Habitat

The predicted forage fish habitat identified using the "Suitable Forage Fish Spawning Habitat in the Gulf Islands" ShoreZone model is selecting for favourable spawning habitat attributes for forage fish, including specific sediment types, presence of overhanging vegetation, and protected to semi-exposed beach types.

- Predicted Continuous Suitable Forage Fish Habitat
- Predicted Patchy Suitable Forage Fish Habitat
- ShoreZone Mapping Completed in 1990's

Scale 1:100,000



Imagery sourced from Esri
Predicted habitat model credited to Coastal & Ocean Resources Inc.
Suitable forage fish habitat sourced from Islands Trust

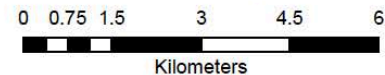


Parksville, and Qualicum Beach Area Predicted Forage Fish Habitat

The predicted forage fish habitat identified using the "Suitable Forage Fish Spawning Habitat in the Gulf Islands" ShoreZone model is selecting for favourable spawning habitat attributes for forage fish, including specific sediment types, presence of overhanging vegetation, and protected to semi-exposed beach types.

- Predicted Continuous Suitable Forage Fish Habitat
- Predicted Patchy Suitable Forage Fish Habitat
- ShoreZone Mapping Completed in 1990's

Scale 1:100,000



Imagery sourced from Esri
Predicted habitat model credited to Coastal & Ocean Resources Inc.
Suitable forage fish habitat sourced from Islands Trust





Qualicum Bay, and Bowser Area Predicted Forage Fish Habitat

The predicted forage fish habitat identified using the "Suitable Forage Fish Spawning Habitat in the Gulf Islands" ShoreZone model is selecting for favourable spawning habitat attributes for forage fish, including specific sediment types, presence of overhanging vegetation, and protected to semi-exposed beach types.

- Predicted Continuous Suitable Forage Fish Habitat
- Predicted Patchy Suitable Forage Fish Habitat
- ShoreZone Mapping Completed in 1990's

Scale 1:100,000



Imagery sourced from Esri
Predicted habitat model credited to Coastal & Ocean Resources Inc.
Suitable forage fish habitat sourced from Islands Trust

